

## Cars Lightning McQueen craft



For example, to represent a Lightning McQueen (or even another character) in a game, it can be made from a cardboard box with simple means.

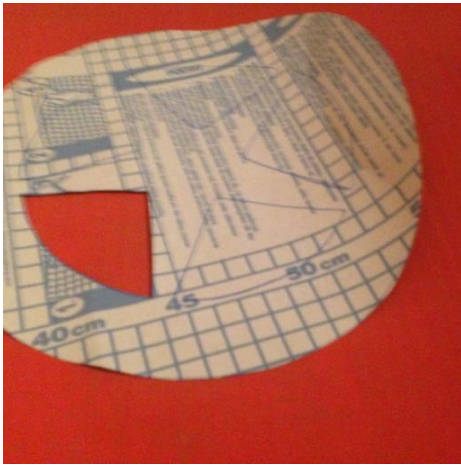
### Material

- 1 cardboard box (moving box)
- Craft paint (poster paint)
- brush
- glue
- Felt-tip pens (markers)
- Adhesive film
- Paper
- Scissors
- Cord
- 1 eels
- For the wheels: 4 plastic or paper plates and 4 [pattern bag clips](#)

### Instruction

1. Adapt the cardboard box so that one person can fit in it (see photo above). For this, cut away those parts which are not needed.
2. Apply the base color to the cardboard box with a brush and let the color dry.
3. For additional parts (such as eyes, mouth, windows, etc.) cut pieces of cardboard (or even paper and tape), paint with paint and brush or markers, and glue to cardboard box.
4. **Wheels:** Design plastic plates with brush and paint or/and waterproof felt-tip pens (markers) as well as adhesive foil (see pictures below). Use an eel to poke a hole in the center of the plastic plate as well as in the cardboard box where the wheel will be attached. Attach the wheel with the [pattern bag clip](#), which is poked through the hole in the plastic plate and the cardboard box.
5. Punch two holes in the front and two holes in the back of each cardboard box with the eel. Cut two strings of equal length and attach one string to each side in a hole in the front and one in the back by the cardboard box, so that the cardboard box can be hung over the shoulders with the two strings by the person.

## Pictures wheels





## Image credits

Cover photo: Andreas Freivogel

Additional images: Anja Fritz