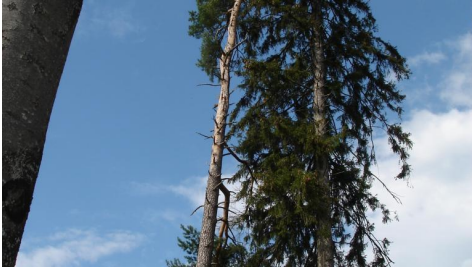


Protecting the environment and nature



Various tips and guidelines on how to treat the environment and nature properly.

Take care of plants

- Plants are the habitat of animals, respect them!
- Leave young plants standing and do not damage them
- Do not scratch or cut into the bark of a tree
- Do not cut branches unnecessarily, do not injure the tree in the process
- Do not hammer nails, screws etc. into trees. Use string or rope for fastening

Leave animals alone

- avoid unnecessary noise, because many animals are very jumpy!
- do not damage animal habitats
- Respect animal and nature conservation zones

Fire caution

- do not throw away kindling or smoldering objects
- watch out for flying sparks
- avoid fires in dry and very warm areas

Pay attention to paths

- always walk on existing paths
- do not walk through high meadows
- Always keep your dog on a leash or under control
- Noisy means of transportation belong on the road
- Do not throw stones down when hiking

Litter

- litter lying around is a danger to animals and the environment!
- Always dispose of waste properly

Tip: playfully clean up the site or forest at the beginning or end of a camp

In general:

Respect other people's property! Always leave nature the way you want to find it.

Picture credits

Cover picture: Juropaarchiv, www.juopa.net